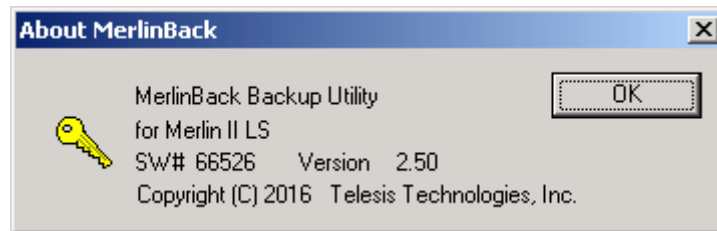


MerlinBack Quick Start Guide



Overview

MerlinBack is a backup utility designed for use with Merlin II LS, Merlin III, and Merlin Touch PS systems. It is a useful tool that can save time and money by giving the user a means of quickly restoring the *last-known-good* settings specific to that system.

System settings should be routinely archived to help with system recovery should that need arise. If the system PC (or its hard disk drive) has to be replaced, MerlinBack helps get the system back into production with minimal effort: After reinstalling the Merlin software, run MerlinBack to restore the last-known-good settings.

Using MerlinBack is as simple as 1-2-3! There is no real installation—just run the MerlinBack executable. This document will serve as a quick-start guide to get you up and running in no time.



Some operating systems require that the MerlinBack utility be launched “as an ADMINISTRATOR” to effectively perform.



Backup and Restore operations are destructive and there is no warning that files will be overwritten.

Backup

Step 1: Choose a Marker

The image shows the MerlinBack software window with the following configuration:

- Step 1: Choose a marker**
 - ☐ Merlin II LS
 - ☐ Merlin III
 - ☒ Merlin Touch PS
- Step 2: Choose the operation and a folder for the settings**
 - Choose the operation to be performed: ☒ Backup ☐ Restore
 - Settings folder: Z:\MBK_0127
- Step 3: Select the settings to be affected.**

Setting	Path
<input type="checkbox"/> Patterns (*.*)	C:\Telesis\TMC600\Merlin\PATTERNS
<input type="checkbox"/> LOGOs (DXF, TTB, & Bitmaps)	C:\Telesis\TMC600\Merlin\LOGOS
<input type="checkbox"/> Telesis Vector Font (*.TFF)	C:\Telesis\TMC600\Merlin\FONTS
<input type="checkbox"/> Keyboard Layouts (*.tkp)	C:\Telesis\TMC600\Merlin\KEYPAD
<input type="checkbox"/> BM470M settings (NET.DAT)	
<input type="checkbox"/> Log Files (*.*)	C:\Telesis\TMC600\Merlin\LOG
<input type="checkbox"/> Control settings (TCP file) – Marker, axes	
<input type="checkbox"/> System settings (System.dat)	
<input type="checkbox"/> All PARAMS*.DAT	
<input type="checkbox"/> Registry Settings	
<input type="checkbox"/> Query Text File	

Buttons: Check ALL, UNCheck ALL


0 files found
- Step 4: Perform the operation**

BACKUP

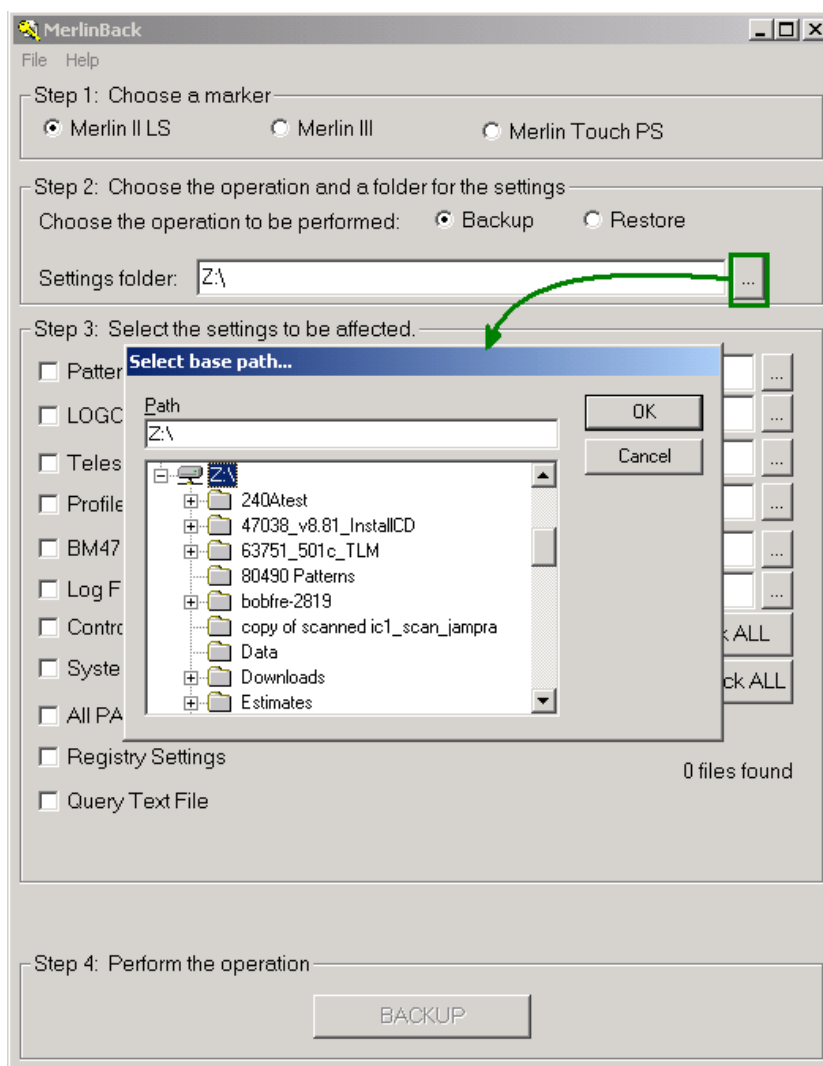
Step 2: Choose an Operation and Destination Folder

If there is no existing archive, we first need to perform a BACKUP operation, so click on the BACKUP radio button.

Type in or browse to the **Settings folder**¹. This is the path that will be the root folder to hold your archived settings files.

Tip: If the destination folder does not exist, click on the Browse button  to open the Select Base Path dialog, and browse to as much of the existing path as possible. Click OK to select it into the Settings folder.

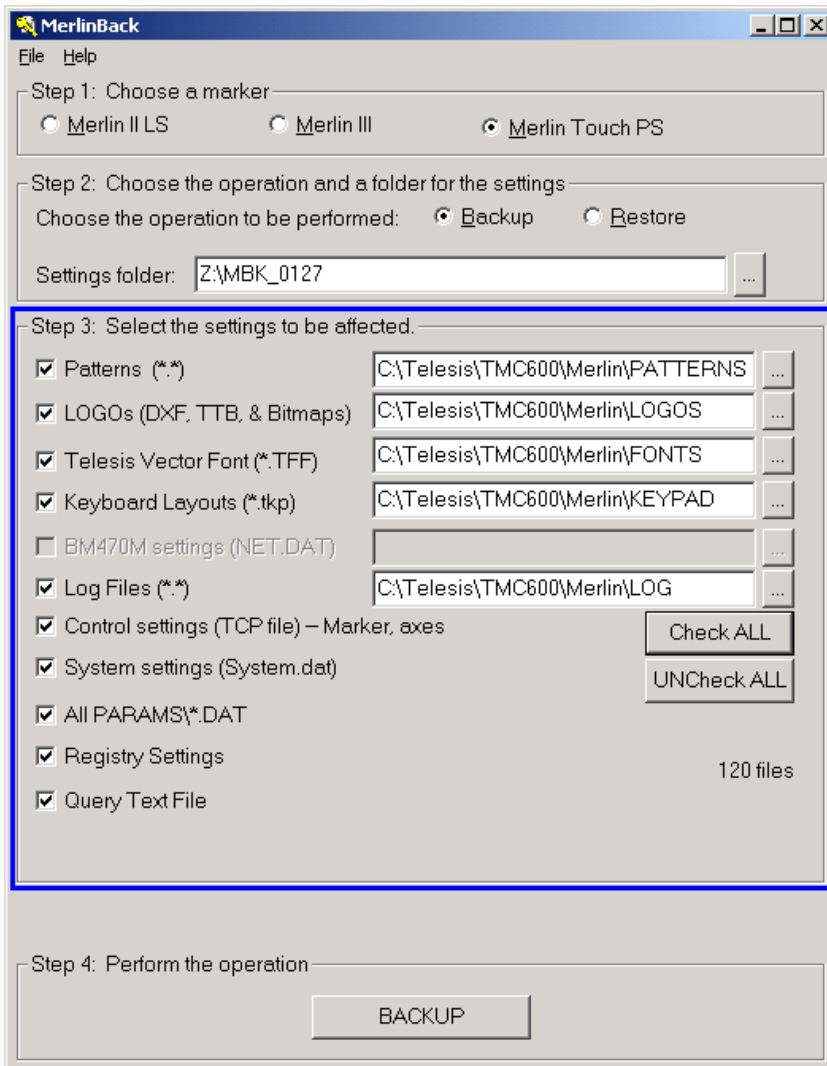
You can then type in the remainder of the desired destination path, even if it doesn't exist. MerlinBack will create the folder at the beginning of the BACKUP operation.



¹ Paths must be formatted as local file system (LFS) paths as opposed to uniform naming convention (UNC) paths. Therefore, to access a network folder, that folder must be accessed via a mapped drive.

Step 3: Select the settings to be affected.

Now that we have chosen a path, it is time to select one or more of the checkboxes. When a box gets checked, MerlinBack immediately searches for the item's associated settings file. The "files found" indicator updates with the number of files found for backup². Un-checking a box removes that item's files from the list of files to be backed up.



All checkboxes were selected for this example.

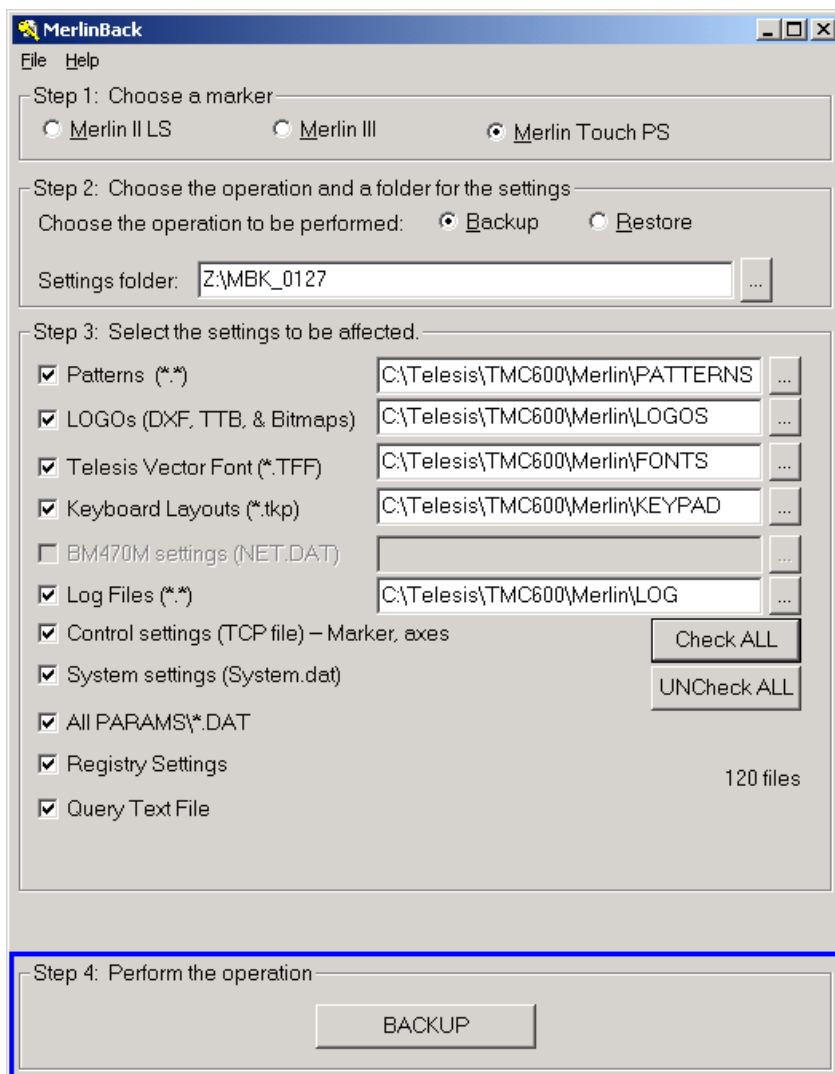
Again, at least one of the "settings" must be checked to enable the operation button for the next step.

Special Note for TMC600

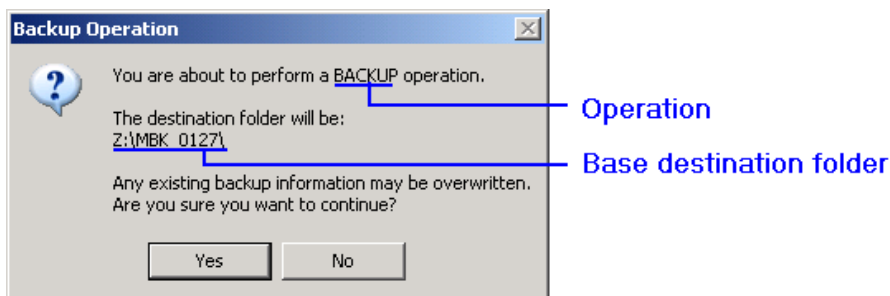
The paths for Patterns, Logos, Fonts, etc., are defaulted to the factory locations. If the files to be archived are not in the factory default location, browse to the appropriate folder to set its path before archiving.

² There is one exception: Checking/un-checking the Registry Settings item will not change the Files Found indicator. Operations on the registry settings involve more than a file copy operation.

Step 4: Perform the operation.



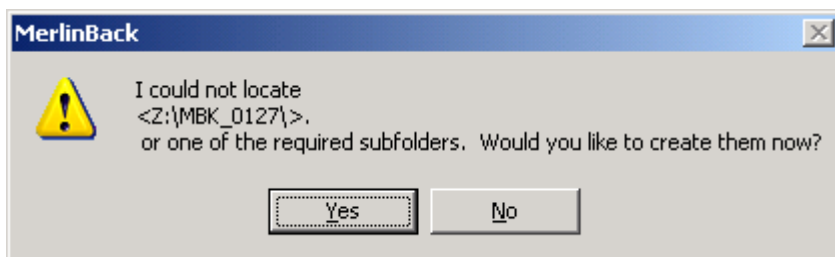
Click the operation button to perform the BACKUP. A confirmation dialog will be displayed, showing the base path for the destination files.



Click **YES** to continue; **NO** to cancel the operation.

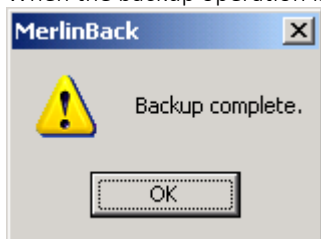
MerlinBack Quick Start Guide

After the **Yes** button is clicked and the **Backup Operation** begins, the MerlinBack utility tries to locate the selected base path from Step 2. If the folder is missing, a message similar to the following will appear:



Choosing '**Yes**' causes the application to attempt to create the Settings Folder (i.e., Z:\MBK_0127) and perform the backup for the selected items. If you choose **NO**, the operation will be canceled.

When the backup operation is finished, the "Backup complete." dialog appears.



Click OK to dismiss it.

Restore

For the **Restore** operation, the editors for user-supplied paths associated with Patterns, LOGOs, Telesis Vector Fonts, etc., play dual roles: They are both masks and destination folders for their associated files. For example, when the MerlinBack application searches for pattern files to restore to

C:\TELESIS\<MARKER>\MERLIN\PATTERNS, it will look in the Settings folder **<Settings Folder>DRV_C\TELESIS\<MARKER>\MERLIN\PATTERNS** and its subfolders for files matching the mask *.T*.

Likewise, any REGISTRY settings are restored from **<Settings Folder>REG**

Step 1: Choose a Marker

MerlinBack

File Help

Step 1: Choose a marker

☐ Merlin II LS ☐ Merlin III ☒ Merlin Touch PS

Step 2: Choose the operation and a folder for the settings

Choose the operation to be performed: ☐ Backup ☒ Restore

Settings folder: E:\

Step 3: Select the settings to be affected.

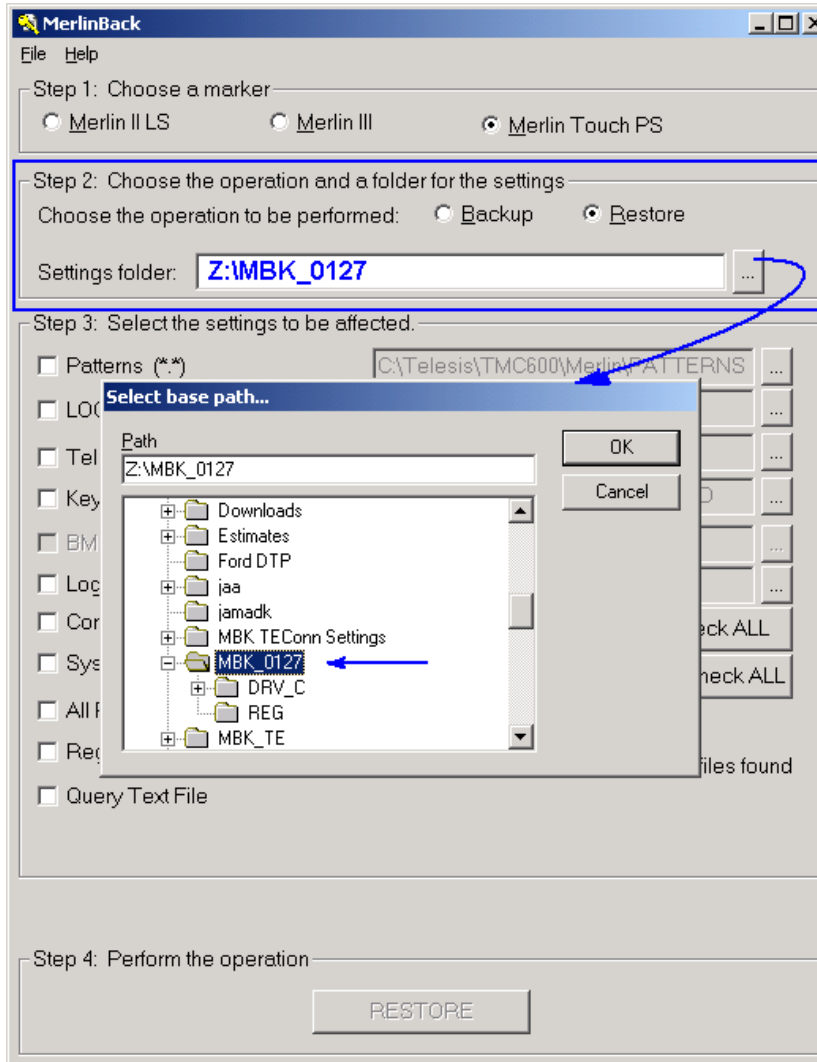
<input type="checkbox"/> Patterns (*.*)	C:\Telesis\TMC500\Merlin\Patterns\	...
<input type="checkbox"/> LOGOs (DXF, TTB, & Bitmaps)	C:\Telesis\TMC500\Merlin\Logos\	...
<input type="checkbox"/> Telesis Vector Font (*.TFF)	C:\Telesis\TMC500\Merlin\FONTS	...
<input type="checkbox"/> Keyboard Layouts (*.tkp)	C:\Telesis\TMC500\Merlin\KEYPAD	...
<input type="checkbox"/> BM470M settings (NET.DAT)	C:\Telesis\4-Axis Parameter Editor\	...
<input type="checkbox"/> Control settings (TCP file) - Marker, axes		
<input type="checkbox"/> System settings (System.dat)		Check ALL
<input type="checkbox"/> All PARAMS*.DAT		UNCheck ALL
<input type="checkbox"/> Registry Settings		
<input type="checkbox"/> Query Text File		0 files found

Step 4: Perform the operation

RESTORE

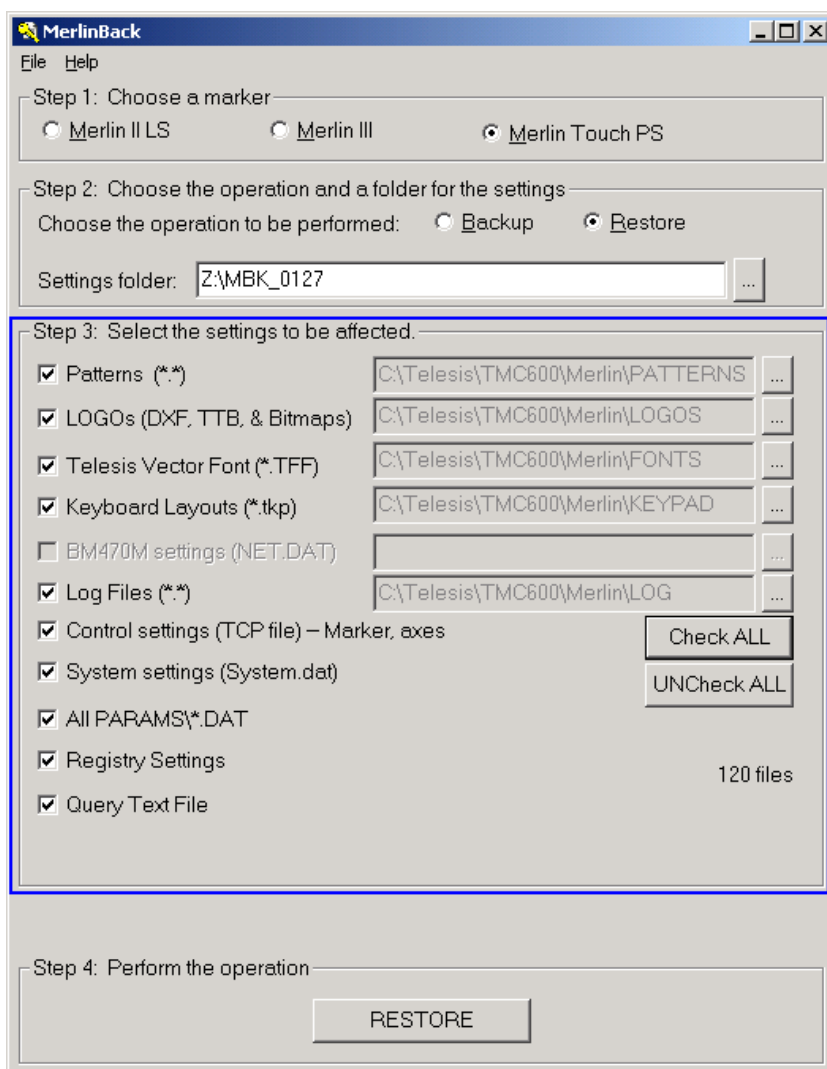
Step 2: Choose the Operation and Folder

Select the base folder of the files you wish to restore.



Step 3: Select the settings to be affected.

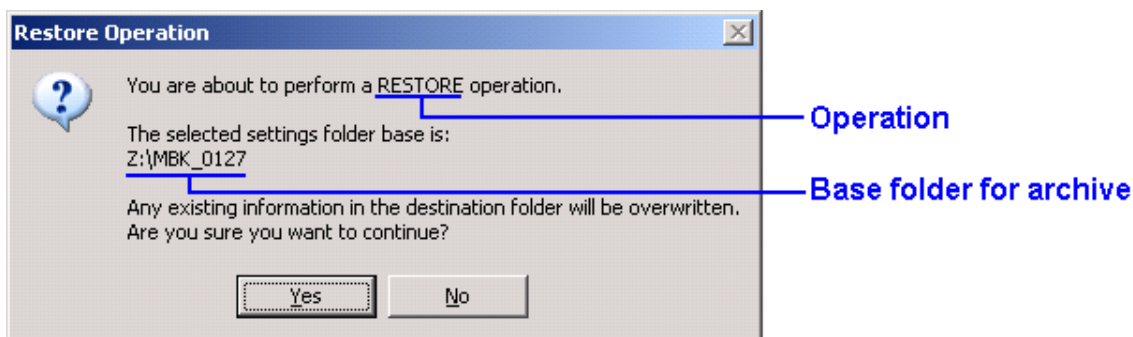
With the Settings Folder established, we can now select one or more of the checkboxes in Step 2. Again, all items were checked for this example. It appears that 120 files were found to restore.



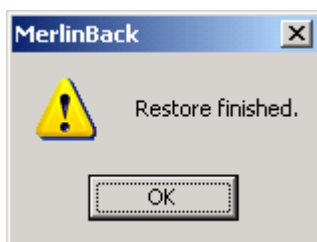
Again, at least one of the items in Step 3 must be checked to enable the “operation” button.

Step 4: Perform the operation.

We have the operation and settings folder identified, and all of the items to be restored are selected. Click the RESTORE button to execute the RESTORE operation. A confirmation dialog for the Restore operation appears similar to the following:



Click **Yes** to start the operation; **No** to cancel it.



Click OK to dismiss the dialog.

Summary

Because each system's settings are unique (and each USER'S settings are unique), it is recommended that a separate archive for each system is maintained. Naming individual settings folders should be sufficient. Likewise, keeping a removable drive (e.g., USB drive) for each <MARKER> system that holds a copy of this utility could simplify the maintenance program a great deal.

Here are some situations that might serve as a trigger to back up your system:

- The system settings have been modified,
- The patterns have changed.
- The <MARKER> settings have been adjusted.

NOTICE: Backup and Restore operations are destructive and there is minimal warning that files will be overwritten.

MerlinBack is a useful tool for maintaining Telesis marking systems that use Merlin II LS, Merlin III, or Merlin Touch PS software. It is fast, relatively easy to use, and promotes system stability and recovery. It is good practice to implement and follow a schedule of system backups.